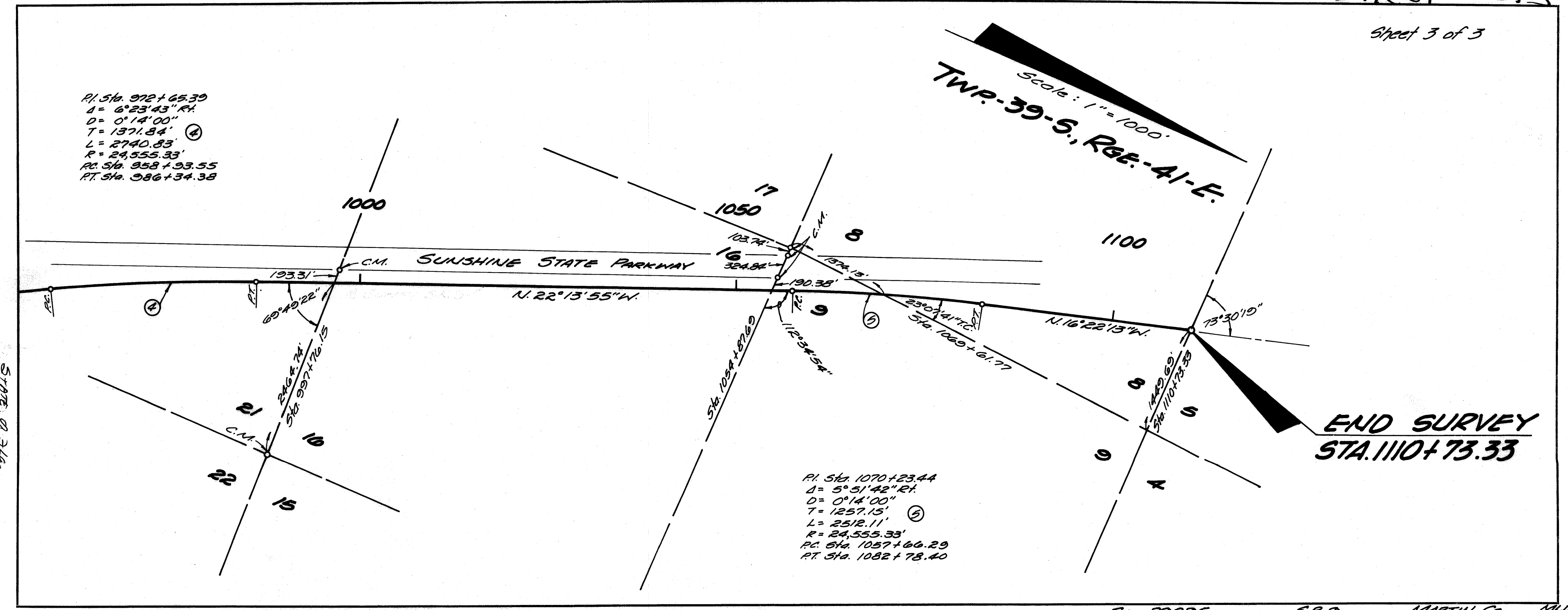


P.I. Sta. 972+65.39
 Δ = 6°23'43" Rt.
 D = 0°14'00"
 T = 1371.84' (4)
 L = 2740.83'
 R = 24,555.33'
 P.C. Sta. 958+93.55
 P.T. Sta. 986+34.38

P.I. Sta. 1070+23.44
 Δ = 5°51'42" Rt.
 D = 0°14'00"
 T = 1257.15' (5)
 L = 2512.11'
 R = 24,555.33'
 P.C. Sta. 1057+66.29
 P.T. Sta. 1082+78.40

Scale: 1" = 1000'
 TWP-39-S, RGE-41-E.

END SURVEY
STA. 1110+73.33



STATE OF FLA.
 Department of Transportation
 1317 N.E. Fourth Avenue
 Fort Lauderdale, Florida 33309